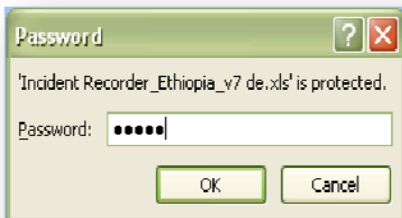
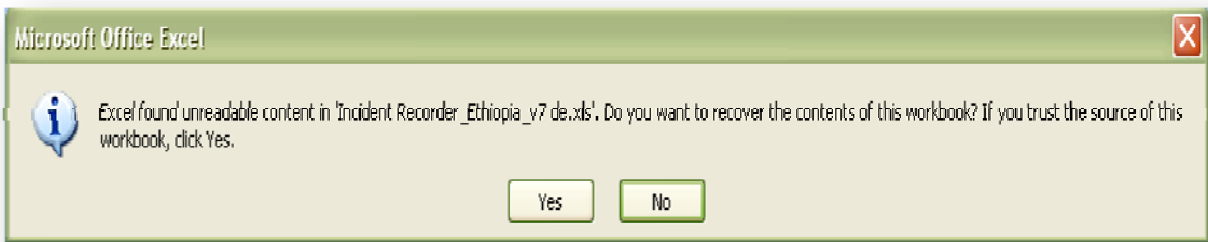
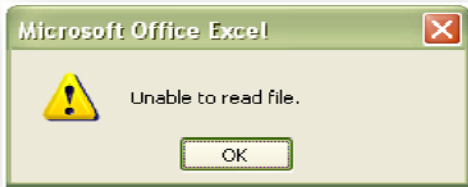


## When I open the IR I receive a message that says “Excel has found unreadable content” and then lists a number of pivot tables. What does this mean?

If a document is saved as a 2007 file and then opened using Excel 2003, the pivot tables will no longer be functional. They will act as normal tables and be ‘stuck.’ The data in the broken pivot tables will not update when you click ‘Refresh.’ When you open the IR, you will get this series of dialogue boxes that look like this:



This means that you have tried to open a workbook that has been saved in Excel 2007 (xlsm) with Excel 2003. *You cannot resolve this problem yourself* and will have to contact the GBVIMS Steering Committee to request a new IR ([GBVIMS@gmail.com](mailto:GBVIMS@gmail.com) or on the website at <http://gbvims.org/contact/>).